

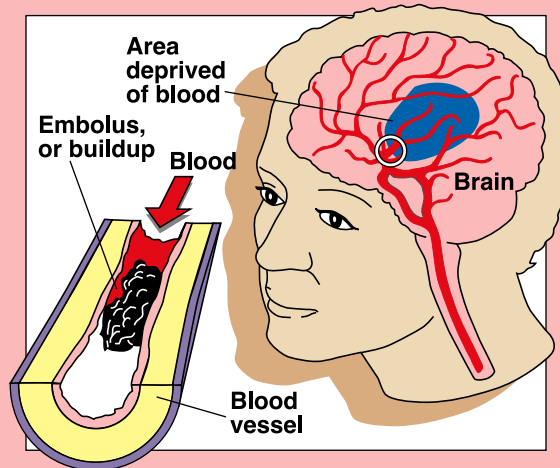
## MEDICALDISCOVERY

### What is a stroke?

A stroke is the interruption of blood supply to, and the subsequent death of, a part of the brain. Though fatal or disabling in most cases, new therapy and drugs offer hope.

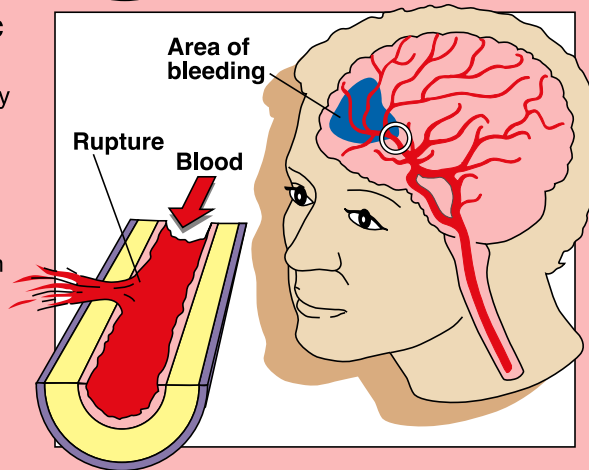
#### Ischemic stroke

■ Buildup on the lining of an artery may constrict blood flow (thrombotic stroke), or an embolus, usually a clot, may move from another area and lodge in a narrow artery (embolic stroke). Roughly 75 percent of strokes are ischemic.



#### Hemorrhagic stroke

■ A vessel may rupture and spill blood into the brain. About one-fourth of strokes are of this type. The rupture may occur in the brain or in the membrane covering it.



SOURCE: AMA  
Encyclopedia of  
Medicine