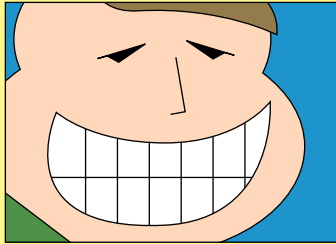


MEDICAL DISCOVERY

Know the stroke test

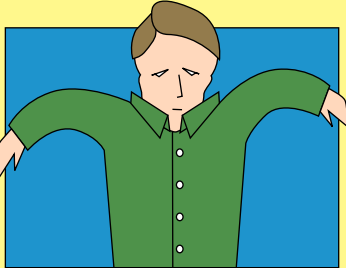
Getting a stroke victim to a hospital fast is important. A new test is very accurate at authenticating stroke symptoms. It is simple and can be used to diagnose most strokes.

■ The Cincinnati Pre-Hospital Stroke Scale (CPSS) was found in a recent study to be about 90 percent accurate, even when used by someone who was a stranger to the stroke victim.

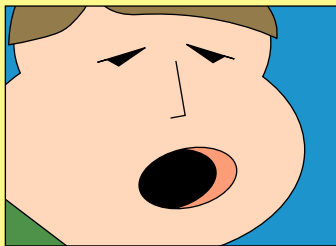


How to do it...

1 Smile: Ask the person to give a big smile, or “show me your teeth.” The “smile” test checks for one-sided facial weakness — a classic sign of stroke.



2 Raise both arms: Have the person close their eyes and raise their arms. Stroke patients typically cannot raise both arms equally — a sign of neural weakness.



3 Talk to me: Ask the victim to repeat a simple sentence. Check for slurring of speech, which is a good sign of stroke. “Don’t cry over spilled milk” or some similar phrase, with a lot consonant/vowel mixtures, is good.

SOURCE: Web MD